

# S212-2L Double-Layer Glass Reactor

Constant rotate speed, no electric brush

no spark, safe and stable, enable continuous working

## S212-2L 双层玻璃反应釜

转速恒定，无电刷

无火花，安全稳定，可连续工作



☎ whatsapp: +86-13783661974

☎ : +86-371-67447888

☎ : +86-371-67447999

🌐 : www.rotovap.cn

@ : rotovap@lanphan.com

# PRODUCT DESCRIPTION

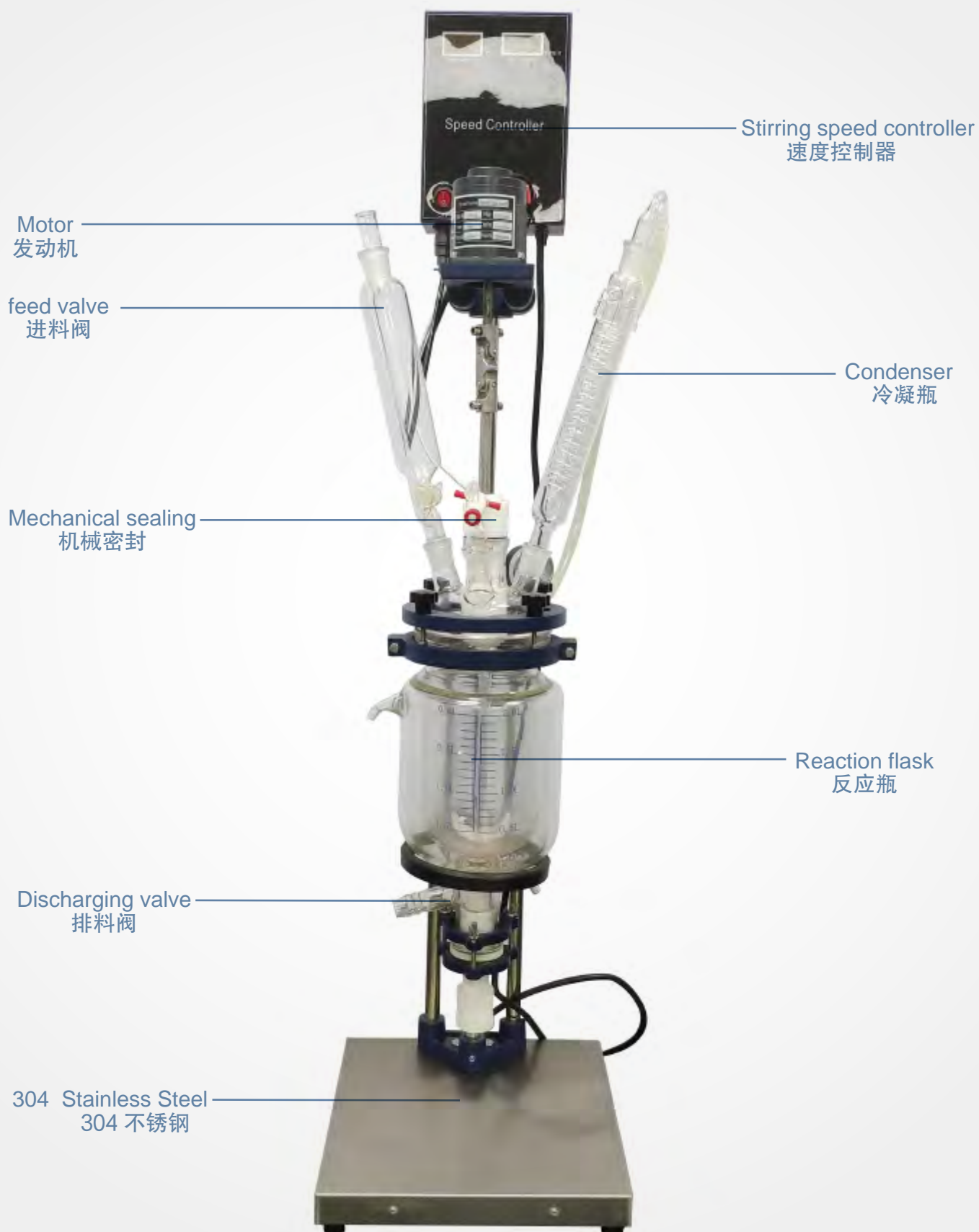
## 产品描述

S212-2L double-layer glass reactor' s reaction flask volume is 2L, interlayer volume is 0.8L, stirring diameter of axle is 8mm, power of stirring is 40W. S212-2L double-layer glass reactor is an audacious product who has combined advantages of domestic and foreign like products, it adopts double-layer glass design, put reaction solvent in internal layer to do stirring reaction, connect different cold and heat sources(refrigerating fluid, hot water or hot oil) to interlayer to do cyclic heating or cooling reaction. Under set constant temperature condition, you can conduct stirring reaction under normal or negative pressure in airtight glass reactor, as well as conducting backflow and distillation of reaction solution. S212-2L double-layer glass reactor is an ideal pilot test and production equipment for modern fine chemical engineering, biological pharmacy and new material synthesis. This glass reactor series mainly contains following parts: double-layer glass reaction kettle, a set of component cover of glass reactor, condenser, constant voltage funnel, frequency conversion controller, rotate stirring and sealing system, stainless steel frame system, etc.

S212-2L双层玻璃反应釜反应瓶容积2L，夹层容量0.8L，搅拌轴径8mm，搅拌功率40W。S212-2L是兰帆现有玻璃反应釜系列中结合国外、国内同类产品优点，大胆创新的一款产品，采用双层玻璃设计，内层放入反应溶媒可做搅拌反应，夹层可通上不同的冷热源(冷冻液，热水或热油) 做循环加热或冷却反应。在设定恒温条件下，在密闭的玻璃反应釜内，可根据使用要求在常压或负压条件下进行搅拌反应，并能做反应溶液的回流与蒸馏，是现代精细化工、生物制药和新材料合成的理想中试、生产设备。该系列反应釜主要部分有：双层玻璃反应釜体、玻璃反应釜组件盖一套、冷凝器、恒压漏斗、变频控制器、旋转搅拌及密封系统、不锈钢框架系统等。

## DETAILS DRAWING

### 零件详图



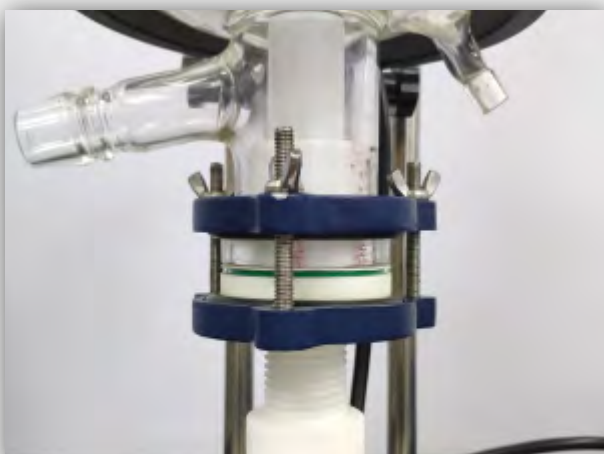
# PRODUCT PARAMETER

## 产品参数

Type 型号	S212-2L
Glass Material 玻璃材质	GG-17
Frame Material 框架材质	Stainless Steel 不锈钢
Reaction flask volume 反应瓶容积	2L
Interlayer volume 夹层容量	0.8L
Flange type oil in and out circulation port 法兰式进出油循环口	Enter from low port, come out from high port 低进高出
Number of reactor bottle 釜盖瓶口数	5
Discharge outlet liftoff height 放料口高地	300mm
Reactor reaction temperature 釜体反应温度	-80-250 degree
Vacuum degree 真空度	0.098Mpa
Stirring speed 搅拌转速	0-800rpm
Stirring diameter of axis 搅拌轴径	8mm
Stirring power 搅拌功率	40W
Voltage/Frequency(V/Hz) 电压/频率 (V/Hz)	220V/50Hz
Baseboard Dimension 底板尺寸 (mm)	325*345
Boundary dimension(mm) 外形尺寸 (mm)	350*345*1000
Package dimension(mm) 包装尺寸 (mm)	1200*480*400 0.23m <sup>3</sup>
Package Weight(KG) 包装重量(kg)	32

## PRODUCT DETAILS

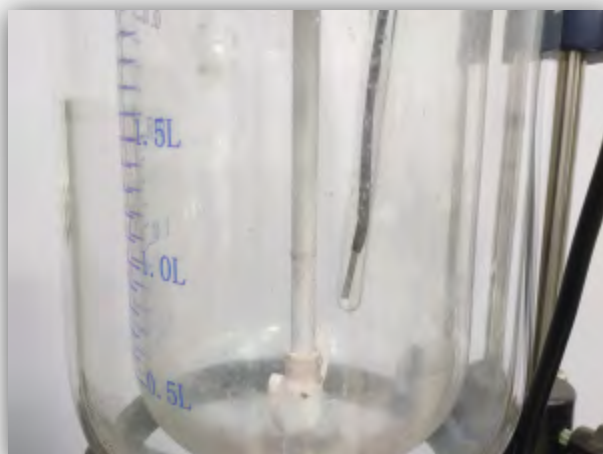
### 细节优点



### Discharging valve

#### 放料阀门

PTFE inclined discharge valve makes it convenient to recycle solvent  
四氟斜出料放料阀, 回收溶媒十分快捷



### Sealing

#### 密封口

adopts high borosilicate glass(GG-17 material), owns excellent chemical and physical properties, transparency bottle makes it easy to observe reaction liquid material

采用高硼硅玻璃(GG-17材质), 有优良的物理化学性能, 瓶体透明、可见反应液料



### Frequency changer

#### 变频器

set rotary speed by speed governing turn-knob, which is perceptual intuition and convenient

转速可通过调速旋钮设定, 直观方便



### Main structure

#### 主体结构

made from stainless steel and aluminium alloy, beauty in appearance and durable in use

不锈钢主体框架+铝合金材质, 美观坚固耐腐蚀

## MATCHING PRODUCTS

### 配套产品



S212-2L Reactor  
S212-2L反应釜



Chiller  
制冷泵



Vacuum Pump  
真空泵



Constant Temperature Water Bath  
水油浴锅



## SERIES PRODUCTS

系列产品



S212-2L



S212-20L



S212-50L



S212-100L






# QUALITY CERTIFICATION

## 品质认证

 <b>ISET S.r.l.</b> Sede Legale e Office Via D'Adda 10 - 40138 Bologna (BO) Tel. +39 051 219 18880 info@iset.it <a href="http://www.iset.it">www.iset.it</a>		Cap. Soc. di Euro 100.000,00 ISET S.p.A. P.A. Via Pavesi 40138 Bologna (BO) Tel. +39 051 219 18880 info@iset.it <a href="http://www.iset.it">www.iset.it</a>	
<b>CERTIFICATE OF COMPLIANCE</b> Certificado de Conformidade - Certificação de conformidade - Konformitätserklärung			
<b>1) APPLICANT:</b> Henan Lanphan Trade Co., Ltd. Room 801, Building B, North Jianshe Road, West Qingling Road, Zhongyuan District, Zhengzhou City, China <b>MANUFACTURER:</b> Henan Lanphan Industry Co., Ltd. North Jianshe Road, West Qingling Road, Zhongyuan District, Zhengzhou City, China		<b>2) CERTIFICATE NO.:</b> TI0524EP10011804 <b>TEST REPORT NO.:</b> DL-20180100046 DL-20180100045 DL Certification Testing Co., Ltd.	
<b>3) WITH REFERENCE TO EC DIRECTIVE APPLIED:</b> Low Voltage Directive 2014/35/EU Electromagnetic Compatibility 2014/53/EU <b>HARMONIZED STANDARDS APPLIED:</b> EN 61326-1:2013 EN 61000-3-2:2014 EN 61000-3-3:2013 EN 61010-1:2010		<b>4) CERTIFICATION ISET MARK:</b> 	
<b>5) PRODUCT CHARACTERISTICS:</b> Circulating Water Vacuum Pump <b>TRADE MARK:</b> <b>MODEL(S):</b> SHZ-900, SHZ-1011, SHZ-CA, SHZ-CH, SHZ-CT, SHZ-CD, SHZ-2000			
<b>REMARK:</b> The verification has been carried out on a voluntary basis. We attest that a TCF is in place. The product(s) satisfies the requirements of the Certification Mark of ISET, in reference to the above list standards. The above compliance mark can be found on the product(s) according to the ISET regulation about its release. This verification does not imply assessment of the production and the products. Notice of the CE marking: The label of the CE marking. Not less than 5mm height. Before putting the product(s) into market, CE marking and EC declaration are duties of the manufacturer. The manufacturer is responsible to start the CE marking certification procedure and to perform the activities according to all the relative directives.			
<b>6) DATE OF ISSUE:</b> 16/01/2018		<b>DATE OF EXPIRE:</b> 15/01/2021	
CERTIFICATION MANAGER  			

 <b>ISET S.r.l.</b> Sede Legale e Office Via D'Adda 10 - 40138 Bologna (BO) Tel. +39 051 219 18880 info@iset.it <a href="http://www.iset.it">www.iset.it</a>		Cap. Soc. di Euro 100.000,00 ISET S.p.A. P.A. Via Pavesi 40138 Bologna (BO) Tel. +39 051 219 18880 info@iset.it <a href="http://www.iset.it">www.iset.it</a>	
<b>CERTIFICATE OF COMPLIANCE</b> Certificado de Conformidade - Certificação de conformidade - Konformitätserklärung			
<b>1) APPLICANT:</b> Henan Lanphan Trade Co., Ltd. Room 801, Building B, North Jianshe Road, West Qingling Road, Zhongyuan District, Zhengzhou City, China <b>MANUFACTURER:</b> Henan Lanphan Industry Co., Ltd. North Jianshe Road, West Qingling Road, Zhongyuan District, Zhengzhou City, China		<b>2) CERTIFICATE NO.:</b> TI0524EP10011803 <b>TEST REPORT NO.:</b> DL-20180100046 DL-20180100075 DL Certification Testing Co., Ltd.	
<b>3) WITH REFERENCE TO EC DIRECTIVE APPLIED:</b> Low Voltage Directive 2014/35/EU Electromagnetic Compatibility 2014/53/EU <b>HARMONIZED STANDARDS APPLIED:</b> EN 61326-1:2013 EN 61000-3-2:2014 EN 61000-3-3:2013 EN 61010-1:2010		<b>4) CERTIFICATION ISET MARK:</b> 	
<b>5) PRODUCT CHARACTERISTICS:</b> Rotary Evaporator <b>TRADE MARK:</b> <b>MODEL(S):</b> RE-50, RE-200, RE-42A, RE-52C, RE-2010, RE-2000, RE-5000, RE-2000C, RE-501, RE-5000A, RE-5000B, RE-5000C, RE-5000D, RE-1002, RE-2002, RE-5002, RE-5003, RE-5004, RE-1005, RE-1010, RE-1020, RE-1050			
<b>REMARK:</b> The verification has been carried out on a voluntary basis. We attest that a TCF is in place. The product(s) satisfies the requirements of the Certification Mark of ISET, in reference to the above list standards. The above compliance mark can be found on the product(s) according to the ISET regulation about its release. This verification does not imply assessment of the production and the products. Notice of the CE marking: The label of the CE marking. Not less than 5mm height. Before putting the product(s) into market, CE marking and EC declaration are duties of the manufacturer. The manufacturer is responsible to start the CE marking certification procedure and to perform the activities according to all the relative directives.			
<b>6) DATE OF ISSUE:</b> 16/01/2018		<b>DATE OF EXPIRE:</b> 15/01/2021	
CERTIFICATION MANAGER  			

 <b>CERTIFICATION EUROPE</b> HONGKONG	
<b>Certificate of Registration</b> Certificate NO: 10134302E	
This is to Certify that the Environmental Management System of <b>Henan Lanphan Industry Co., Ltd.</b> Room 801, Block B, North of Jianshe Road, West of Qingling Road, Zhongyuan District, Zhengzhou City, He'nan Province, China Has been audited to the following Environmental Management System standard: <b>ISO14001:2015</b> This system is valid for the Sales of Valves, pipe fittings, rubber products, plastic products, metal products, glassware, water treatment equipment, stainless steel products, children's toys, needles textiles, mechanical and electrical products, amusement equipment, building materials, machinery equipment, hardware tools; Design and construction of anti-corrosion insulation engineering, municipal engineering, highway engineering; Construction labor subcontracting; Electromechanical equipment installation engineering; Installation of water and electricity; Integrated wiring system engineering; Installation and maintenance of computer; Technical development, technology transfer and technical consultation of computer software; Technical development of photoelectric integration; Property services; Cleaning services involved in environmental management activities Date of issue: Jan. 09, 2018 Date of expiry: Jan. 08, 2021 This certificate will not remain valid only if the certified organization accepts at least one surveillance audit annually within the validity period of the certificate in which the surveillance audit conforming mark is in the designated position on the certificate.	
  	
Issued by:  <div> <div>12months</div> <div>24months</div> </div> CERTIFICATION EUROPE HONGKONG LIMITED <a href="http://WWW.CCE-HK.COM">WWW.CCE-HK.COM</a>	

 <b>CERTIFICATION EUROPE</b> HONGKONG	
<b>Certificate of Registration</b> Certificate NO: 10134302Q	
This is to Certify that the Quality Management System of <b>Henan Lanphan Industry Co., Ltd.</b> Room 801, Block B, North of Jianshe Road, West of Qingling Road, Zhongyuan District, Zhengzhou City, He'nan Province, China Has been audited to the following Quality Management System standard: <b>ISO9001:2015</b> This system is valid for the Sales of Valves, pipe fittings, rubber products, plastic products, metal products, glassware, water treatment equipment, stainless steel products, children's toys, needles textiles, mechanical and electrical products, amusement equipment, building materials, machinery equipment, hardware tools; Design and construction of anti-corrosion insulation engineering, municipal engineering, highway engineering; Construction labor subcontracting; Electromechanical equipment installation engineering; Installation of water and electricity; Integrated wiring system engineering; Installation and maintenance of computer; Technical development, technology transfer and technical consultation of computer software; Technical development of photoelectric integration; Property services; Cleaning services Date of issue: Jan. 09, 2018 Date of expiry: Jan. 08, 2021 This certificate will not remain valid only if the certified organization accepts at least one surveillance audit annually within the validity period of the certificate in which the surveillance audit conforming mark is in the designated position on the certificate.	
  	
Issued by:  <div> <div>12months</div> <div>24months</div> </div> CERTIFICATION EUROPE HONGKONG LIMITED <a href="http://WWW.CCE-HK.COM">WWW.CCE-HK.COM</a>	



## CUSTOMERS FROM VARIOUS COUNTRIES

各国客户



## FACTORY SITUATION

工厂情况



## TRANSPORT

### 快递物流



Type 型号	S212-2L
Package Size(mm) 包装尺寸(毫米)	1200*480*400
Weight(kg) 重量(kg)	32



#### PACKAGING:

1. Cartons + wooden cases
2. Custom packaging is available.

#### 打包:

1. 纸箱+木箱。
2. 可以提供定制包装。

#### SHIPMENT:

1. We can deliver the goods to you by international express, such as DHL, UPS, TNT, EMS and so on.
2. You can also choose the right one according to the schedule and budget.
3. You may choose to use your own shipping agent.

#### 运输:

1. 我们可以通过国际快递将货物运送给您，如DHL，UPS，TNT，EMS等。
2. 您还可以根据时间表和预算选择一个合适的。
3. 您可以选择使用自己的运输代理商。

## FAQ

### 常见问题解答

1.Question: What's the difference between single-layer and double-layer glass reactor?

Answer: Single-layer glass reactor can directly heating or cooling, it is similar to water or oil bath, inferior in temperature control aspect; while double-layer glass reactor has interlayer between two layers, we can inject water or oil through temperature control equipment and form circulating system, in this way, no matter cooling or heating, its temperature control property is better.

2. What is the glass texture?

Answer: Full set of glass part is produced by G3.3 borosilicate glass, owns excellent chemical and physical properties.

3. Is it easy to clean the reaction bottle ?

Answer: Big cleaning hole is convenient to clean.

1.单层反应釜和双层反应釜的区别是什么？

答：单层直接加热制冷，类似油浴水浴、温控方面之类效果不太理想。双层两层之间有夹层，可以通过温控设备打入水或者油，形成循环，这样不管制冷还是加热温度控制都会更好，更准确。

2.反应釜玻璃材质是什么？

答：全套玻璃仪器采用G3.3硼硅玻璃生产，有良好的化学、物理性能。

3.反应瓶体易于清洗吗？

答：大清洗口，清洗方便。



## PLEASE CONTACT US

Henan Lanphan Industry Co., Ltd

☎ whatsapp:+86-13783661974

☎ :+86-371-67447888

☎ :+86-371-67447999

🌐 :www.rotovap.cn

@ :rotovap@lanphan.com